

W
SIXTH
FORM



Edition 8
May
2024

GEOGRAPHY

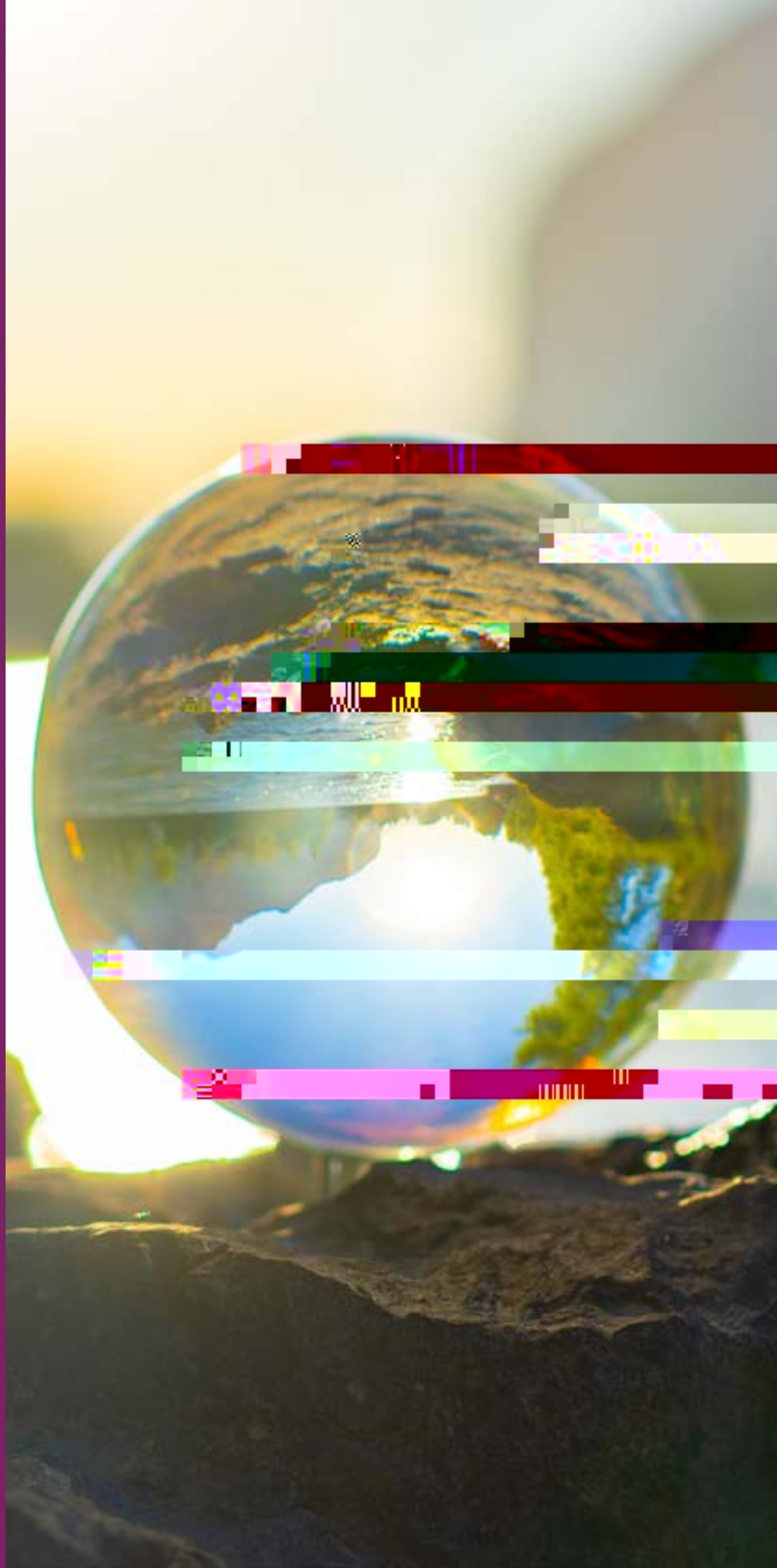
Curriculum Newsletter

YEAR 13

Contact



Brooke Fields
WPT Geography
Subject Director
bfields@cliftonschoo.org



Curriculum Intent

At Wickersley Partnership Trust we understand that getting the curriculum right for each and every individual student is the single most important factor in ensuring progress, encouraging positive engagement and raising aspirations.

We want all students to leave able and qualified to play their full part in an ever-changing world through an ambitious, creative and innovative curriculum, which empowers students with the skills, knowledge and attributes to allow them to succeed in their next phase of education and their working life.

The Geography curriculum is designed to develop curiosity about the world and its people to unlock the key to their future.

Year 13 Curriculum

At A-Level Geography, students study both Human and Physical Geography in depth, focusing on 3 individual topics for each. Students will also undertake an NEA, which contributes 20% of their marks. This is an independent investigation, in which students will undertake research in a Geographical area of their choice.

Global Systems and Governance

This section of our specification focuses on globalisation – the economic, political and social changes associated with technological and other driving forces which have been a key feature of global economy and society in recent decades.

Changing Places

This section of our specification focuses on people's engagement with places, their experience of them and the qualities they ascribe to them, all of which are of fundamental importance in their lives.

Resource Security

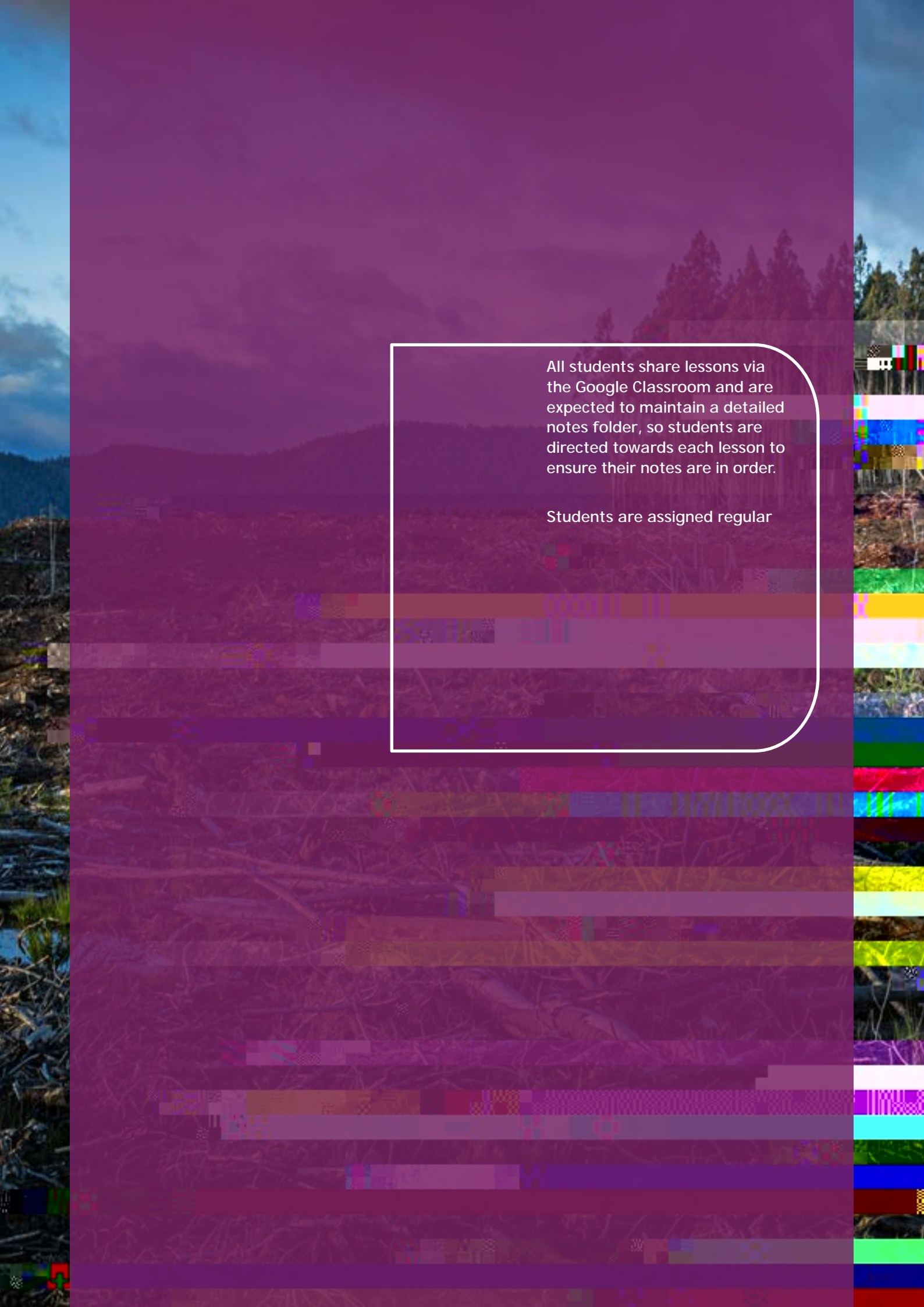
This section of the specification focuses on the large-scale exploitation of unevenly distributed natural resources, which is one of the defining features of the present era.

Water and Carbon Cycles

This section of our specification focuses on the major stores of water and carbon at or near the Earth's surface and the dynamic cyclical relationships associated with them. These are major elements in the natural environment and understanding them is fundamental to many aspects of physical geography.

Hazards

This section of our specification focuses on the lithosphere and the atmosphere, which intermittently but regularly present natural hazards to human populations, often in dramatic and sometimes catastrophic fashion. By exploring the origin and nature of these hazards and the various ways in which people respond to them, students are able to engage with many dimensions of the relationships between people and the environments they occupy.



All students share lessons via the Google Classroom and are expected to maintain a detailed notes folder, so students are directed towards each lesson to ensure their notes are in order.

Students are assigned regular

Praise and Reward

Our rewards system can be broadly split into four categories: classroom level, subject level, school level and privilege rewards. We'll focus on classroom and subject rewards here - for more information about our rewards schemes, please see our website.

CLASSROOM LEVEL REWARDS

Awarded for: working hard, taking risks and rising to a challenge, making mistakes and learning from them, helping others, and taking pride in the school community.

Rewarded by: praise postcards, positive phone calls to parents/carers, positive text messages home, and lesson based prizes.

SUBJECT LEVEL REWARDS

Reward scheme: Star of the Week, Curriculum Awards (Subject/School Way, Participation, Working with Pride, Embracing the Whole Curriculum), High Flyer, Extra Mile, Most Improved.

Rewarded by: names displayed on reward boards, certificates, social media posts.

Broadening Horizons

Our intent is that all students have a full understanding of how to develop themselves as well rounded citizens, maintain healthy relationships and understand how to keep themselves safe both online and in their day-to-day life. We want all students to know what options are open to them in the future and understand the routes they have in order to progress on their life journey.

- At the start of the year Year 13, students conducted various field work visits to gain a better understanding of how to carry out a geographical investigation. The knowledge and skills they gathered on these visits will help them to complete their Geographical Controlled Assessment.
- Wider opportunities through residential, Camps International, charitable work and our Duke of Edinburgh provision



University of Sheffield - Geography Society

GeogSoc runs lots of exciting charity fundraisers such as 10k runs and half-marathons, pub quizzes and auctions. This year, alongside Cathedral Archer Project they will be supporting a Sheffield based environmental charity for the first time. Click on the logo for more information.

What is Physical Geography?

Traditionally, Geography is studied as two interconnected parts: Physical Geography and Human Geography. Crash Course Geography discuss Physical Geography in this YouTube short. Click on the logo to watch the video.



We run a series of 'Careers in the Curriculum' weeks in our school. For Geography, this week takes place in May.

Students take part in activities to encourage them to think about how what they learn in the